

Thank you for choosing The3DPC!

Fractal Design Ridge GPU Support Bracket

This instruction will cover the Fractal Design Ridge GPU Support Bracket

Tools needed: 2.5mm Allen Wrench

- 1) Begin by removing the top panel and front IO panel per the Fractal Design manual.



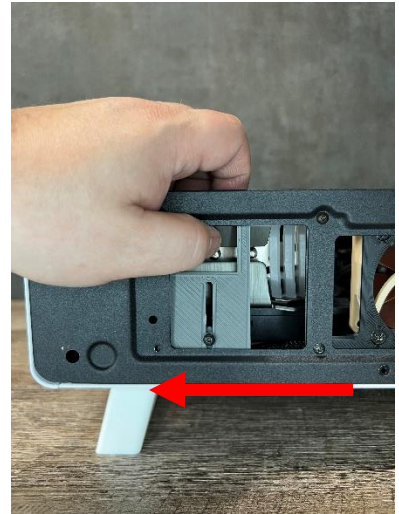
- 2) Select the correct GPU support extensions. There are three in the kit 15mm, 21mm, and 30mm. Once you know the size needed for your GPU, slot the extension onto the bracket. Thread the 3mm screw through the plastic washer and through the bracket into the extension.



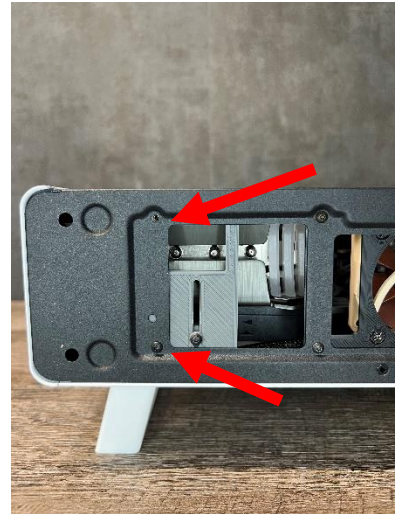
- 3) With the extension and bracket assembled, slide the extension down to the lowest part of the bracket. Insert the assembly into the front of the Ridge chassis bottom first at a 45* angle.



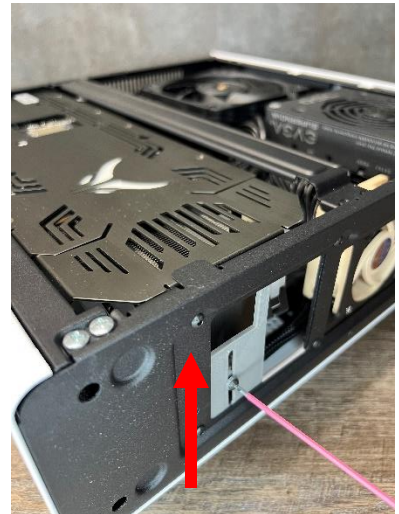
4) Slide the assembly over until it lines up with the two mounting holes.



5) Insert the 3mm screws into the assembly and tighten with a 2.5mm Allen wrench.



6) With the bracket fastened to the chassis, slide the adjustment screw up to meet the GPU and continue until there is roughly 5mm of clearance between the GPU and chassis mounting tap. (See figure 7)



- 7) Failure to leave at least 5mm of clearance may cause the case panel to not close properly or scratch your GPU. Replace the top panel and front IO panel per the Ridge install manual.

